

November 8, 2025

[Website Home](#) [Lunch Menus](#) [Parent Info](#) [Get Involved](#) [Facebook](#) [Twitter](#)



Important Dates

- **Monday, Nov. 11-Friday, Nov. 15 - Kindness Week!**
- **Thursday, Nov. 14 - Character Kids**
- **Friday, Nov. 15 - First Student Council Meeting 7:45 am in room 113**

- **Thursday, Nov. 21 - Spelling Bee 3:50 pm**
- **Friday, Nov. 22 - Kids Kreations Order Forms Due**
- **Wednesday, Nov. 27 - Friday, Nov. 29 - No School**

Kindness Spirit Week Nov. 11-15

Monday 11/11	Tuesday 11/12	Wednesday 11/13	Thursday 11/14	Friday 11/15
<p>Work out Problems with Kindness Day!</p> <p>Wear workout attire.</p>	<p>We Don't Hide From Kindness Day!</p> <p>Wear NEON today to be as <i>bright</i> as you can!</p>	<p>World Kindness Day</p> <p>Wear a Kindness shirt.</p>	<p>We're WILD about Kindness Day!</p> <p>Wear an animal print or something with an animal on it!</p>	<p>Dream of a Kinder World Day!</p> <p>Wear your PJs or comfortable, cozy clothes to school!</p>

Student Council is hosting a Food Drive for the New Berlin Food Pantry!

Please send soup, beans, noodles, peanut butter, canned fruit and other non-perishable items to school.

Nov. 18-22

The class that brings in the most items will be announce on PCTV!



**NEW BERLIN
FOOD PANTRY**
Most Needed Items

The New Berlin Food Pantry is in need of the following items:

- **SPAGHETTI NOODLES**
- **BOXED MASHED POTATOES**
- **COOKIES / CRACKERS**
- **HAMBURGER HELPER**
- **TOMATO SOUP**
- **CHICKEN NOODLE SOUP**



Do you have what it takes? Every year, students across the nation have the opportunity to participate in the Scripps National Spelling Bee, one of the nation's oldest and most iconic competitions. The purpose of the program is to help students improve their spelling, increase their vocabulary, learn concepts, and develop correct English usage.

Poplar Creek students will have an opportunity to showcase their spelling talents at the School Spelling Bee Qualifier.

Poplar Creek Spelling Bee Qualifier

Who: Students in grades 3rd, 4th, 5th, and 6th

What: The qualifier is a written assessment, composed of 40-45 words.

When: Thursday, Nov. 21, immediately after school

How: Complete the attached [permission slip link](#) **no later than 6 p.m. Monday, Nov. 18.**

*The qualifier is a CLOSED event with no spectators. TRANSPORTATION WILL NOT BE PROVIDED! Please make sure your child has arrangements **to be picked up at 4:30 pm** in the Poplar Creek front lobby.

*The top performing students from Poplar Creek will advance to the District Spelling Bee on Thursday, Jan. 16.

LIBRARY NEWS

2024-2025 Quarter 2

SDNB LIBRARY STAFF

District Librarians

Linda Maas - Eisenhower, Elmwood,
Orchard Lane

Barb Uhen- West, Poplar Creek,
Reagan

Library Assistants

Elmwood - Loralie Thomas

Orchard Lane - Carrie Niggemann

Poplar Creek - Ashley Guenterberg

Reagan - Julie Myskowski

BOOK CHECKOUT

As a reminder, students in grades K-
2 can check out 2 books and Grades
3-6 can check out 3 books

Any student with an overdue book
will not be allowed to check out new
books until the overdue book is
returned. Instead, students can
check out ebooks through **Destiny**
Discover. Students can log in using
their Google credentials.

BOOK FINES

At the end of first semester, fines will
be put in Infinite Campus for books
that are overdue by more than 1
month. The fine will be removed
once the books are returned or
replaced.

KIDS' CHOICE AWARD

Students in grades 4-6 have an
opportunity to participate in a reading
challenge sponsored by the New
Berlin Public Library. Selected titles
can be checked out from your school
library or the public library. Voting will
take place from Jan. 22-Feb 12.



School News



We would like to introduce this unique art fundraising activity called Kids Kreations.

This exciting program will allow each participating artist to have artwork professionally processed into a variety of exclusive items.

Look for your child's order packet to find a free page of stickers created from your child's artwork! The stickers are yours to keep!

It will be sent home by Nov. 12. The deadlines are important so that we receive products by Dec. 20.

These products make unique keepsakes and wonderful gifts for the entire family! Please take some time to review the order packet with your child's artwork.

ONLINE ORDERS DUE BY FRIDAY, NOV. 25.

BROCHURE ORDERS (BY CHECK OR CASH) BY FRIDAY, NOV. 22.



Horicon Bank will donate \$1 to the Education Foundation of New Berlin for each Toy donated to the Toy Drive; up to \$1,000.

Bring a Toy, Spread some Cheer,
Help Our Students Grow This Year!

Bring in a toy to donate and join us for Christmas cheer,
including refreshments and fun activities for children!

Horicon Bank	15600 W. Cleveland Ave.	December 7
Open House	New Berlin, WI 53151	10 am – 12 pm

Or drop off at SDNB Schools or District Office Nov 25 – Dec 5



After School Activities

November 2024

Best Buddies Poplar Creek

Follow our region on social media!

Facebook: Best Buddies Wisconsin

Instagram: @BESTBUDDIESWI

BEST BUDDIES



What Unbe-LEAF-able Fun!



Interested in volunteering? Click the campfire below!



Thank you to all of the volunteers who helped out with the October event and to those who donated supplies. With this support we can continue to host exciting events!

UPCOMING COMMUNITY EVENTS

November 13th 4:00-8:00p: Sky Zone Fundraiser @ Sky Zone Milwaukee, W229N1420 Westwood Dr, Waukesha, WI 53186; tickets are on sale now

November 18th 7:00p: Bucks Game with Best Buddies at the Fiserv Forum; tickets are on sale now

November 26th: T-shirt designs are due! Please turn in to Klarissa Schreiner



Questions? Please contact: Klarissa Schreiner
klarissa_schreiner@nbexcellence.org

Amber Foster
fosteramber24@gmail.com

Shanna Radovich
shannalynn@gmail.com

Best Buddies International is a nonprofit 501(c)(3) organization dedicated to establishing a global volunteer movement that creates opportunities for one-to-one friendships, integrated employment, leadership development, inclusive living, and family support for people with intellectual and developmental disabilities.

Our Best Buddies program is looking for volunteers! Sign up here if you are interested!

https://docs.google.com/forms/d/e/1FAIpQLSfUhcLd3kFK-KKuYEEsURdbF8de_9EAOrPRcJzuX2xVq6iXxA/viewform

Community Announcements

NBW Players Presents



Agatha Christie

Friday, November 8 @ 7:00pm
Saturday, November 9 @ 7:00 pm
Sunday, November 10 @ 2:00 pm



Tickets available here:  <https://www.vancoevents.com/us/CPYU>



18695 W. Cleveland Ave
New Berlin, WI 53146
Phone (262) 789-6406
Ext. 3 for Box Office
<https://www.nbexcellence.org/community/westpac.cfm>

**COMMUNITY
CONCERT
SERIES** | 2024
2025

3
SEASON



Ticket
Price
\$10

DAN LEPIEN BAND

Friday, Nov. 15, 2024 – 7p.m.

In Partnership:



For more info visit www.nbexcellence.org/community/westpac-tickets.cfm

GROWING HEALTHY MINDS

PARENT UNIVERSITY NIGHT



HEATHER KREILKAMP

Mindfulness Wellbeing Educator |
Greentree Wellness Academy

EVENT DETAILS

Date: November 20th, 2024

Time: 5:15pm-6:30pm

Location: Poplar Creek Library

17401 W. Cleveland Ave

Children are welcome
to come!

**Registration
is Required**

[Click Here](#)

Join us to learn about Growing Healthy Minds, a curriculum aimed at building resilience and positive coping skills in your child. Discover what they are learning and how you can support these lessons at home!

Questions? Contact: Shannon Wysocki, School Social Worker
shannon.wysocki@nbexcellence.org

Click here for Parent University registration <https://forms.gle/D877pXaMHQBiGhbU8>



“Light the Lights” Ceremony

The New Berlin Veterans Memorial Society’s Board of Directors is pleased to invite all of you to our “Light the Lights” Ceremony. This event, sponsored by the New Berlin Lions Club, will take place at our beautiful Veterans Memorial located at the corner of National Ave. and Casper.

This Ceremony will be held on November 16, 2024 at 6:30pm. Please join us for holiday music, brought to you by Ms. Sarah Lemon and the New Berlin West Choir, and Miss New Berlin, Kailee Doherty, holiday dancers from Ms. Becky’s Dance Studio, hot chocolate, candy canes and a chance to visit with everyone’s favorite Santa Claus, assisted by Santa’s Elves from New Berlin Cub Scouts.

Wait until you see Santa’s Sleigh!!

We look forward to seeing all of you on the 16th as we welcome in the 2024 holiday season!





Holiday Craft Vendor Fair

Over 60 Crafters and Vendors

Adults—\$3

Children Free

Sunday November 24th

New Berlin Eisenhower High School

Breakfast 9am—12pm

Craft Vendor Fair 9am—2pm



Pancakes With *Santa*

Join Santa for a Pancake Breakfast

Children—10 and Under \$6

Adults \$12

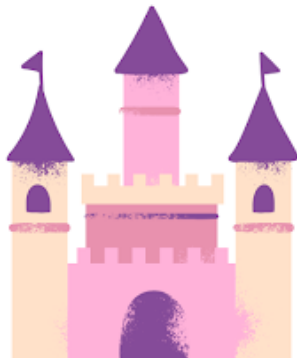
Includes Admission to the Craft Fair

Sponsored by Eisenhower Bands



Activities

- music
- dancing
- candy table
- face paint
- coloring
- photo booth!



JOIN US FOR A MAGICAL EVENING AT NEW BERLIN DECA'S ANNUAL

FATHER DAUGHTER DANCE

DECEMBER 6
ELMWOOD ELEMENTARY
6:00-8:30

PLEASE PAY WITH THE QR CODE OR WITH CASH AT THE DOOR

Contact information:
 Melissa Bahnson
melissa.bahnson@nbexcellence.org



\$5 for each additional daughter

10% of profits go toward Muscular Dystrophy

Grandpas, uncles, and father figures are always welcome!



New Berlin Eisenhower Theater



Get your tickets now for the highly anticipated holiday musical performed by Eisenhower Middle and High School studentsThe Best Christmas Pageant Ever JV. December 6-8!

This is something for the whole family to enjoy.

Tickets for this show are \$15 for adults, \$12 for seniors, and \$10 for students. The link and and QR Code are below

<https://www.vancoevents.com/us/CSWW>



elevate 

PARENT EMPOWERMENT NIGHT

**TOGETHER WE CAN PREVENT
YOUTH SUBSTANCE USE**



TUESDAY, NOVEMBER 19TH 2024

**WAUKESHA SOUTH HIGH SCHOOL • 401 E ROBERTA AVE
USE AUDITORIUM ENTRANCE**

**OPEN TO K-12 PARENTS • NALOXONE TRAINING WITH FREE SUPPLIES
INFO ON AODA TREATMENT • OTHER HIGH INTEREST TOPICS
FREE MEDICATION LOCK BOXES • \$100 AMAZON GIFT CARD RAFFLE**

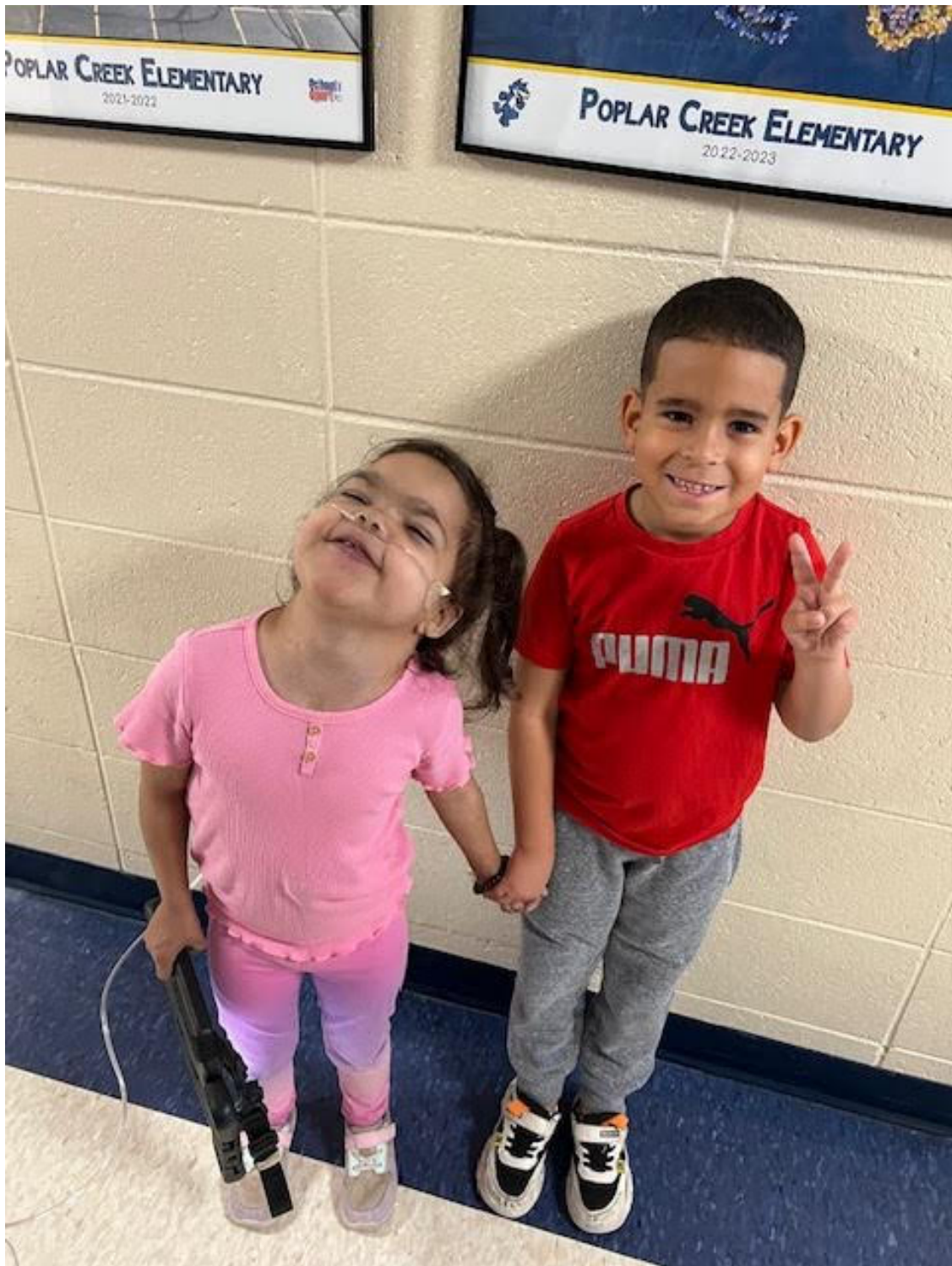
**REFRESHMENTS & RESOURCE FAIR AT 5 PM
SPECIAL GUEST SPEAKER, JOE KIEL AT 5:30 PM
BREAKOUT SESSIONS START AT 6:15 PM**

**JOIN US FOR A NIGHT OF
LEARNING & COMMUNITY!
SCAN THE QR CODE TO
RSVP & LEARN MORE.**



**CHILDCARE FOR
1 YEAR AND UP
PROVIDED
*MUST RSVP**

PC Coyotes Lead, Believe, Achieve!





EDUCATION FOUNDATION

OF NEW BERLIN

*Increasing Financial Support,
Awareness & Advocacy
for The School District of New Berlin.*

Visit www.efnb.org today!

[Do you like us on fb?](#) If not, you are missing out on candid photos and video clips of daily events and activities at PC.

Be sure to [check out our page and like it](#) so you don't miss out!

Poplar Creek Elementary School · 17401 West Cleveland Avenue, New Berlin, WI 53146

Phone: [\(262\) 789-6520](tel:2627896520) · Fax: [\(262\) 789-6234](tel:2627896234)

Copyright © 2014 School District of New Berlin. All Rights Reserved.

The School District of New Berlin does not discriminate against individuals on the basis of age, gender, race, color, religion, national origin, ancestry, creed, pregnancy, marital or parental status, sexual orientation, or physical, mental, emotional, or learning disability. Federal law prohibits discrimination in education and employment on the basis of age, race, color, national origin, gender, religion, or disability. For more information, please follow this link: <http://www.nbexcellence.org/district/disclaimers.cfm>.